

ICBB

Inert gas damper



TABLE OF CONTENTS

1. MOUNTING AGAINST WALL WITHOUT GAP FILLING AND ADDITIONAL SEALING	2
2. MOUNTING AGAINST WALL WITH GAP FILLING AND ADDITIONAL SEALING	3
3. INSTALLATION ON DUCT	5
4. MOUNTING AGAINST FLOOR	7

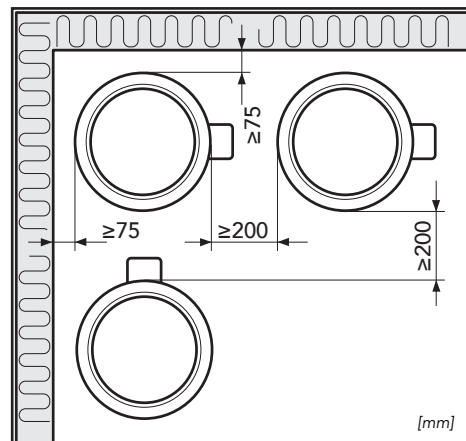
GENERAL

The dampers may be installed in walls/floors separating fire cells with a maximum fire resistance class of EI 60. As the damper forms part of the fire prevention system, it is important that installation is carried out properly in accordance with the installation instructions.

Dampers that are not connected to ducts must be fitted with a safety grille or security grille.

For installation in exterior walls, dampers must be supplemented with weather protection equipment, such as exterior wall grilles, hoods etc. The free area must always be taken into account.

HAGAB ensures that production of its ICBB Inert Gas Damper is carried out in accordance with Manufacturing Control/Type Approval SC0001-13 and its supporting documents.



The minimum distance between dampers must be 200 mm.
The minimum distance to the floor/wall must be 75 mm.

ICBB

Inert gas damper

1. MOUNTING AGAINST WALL

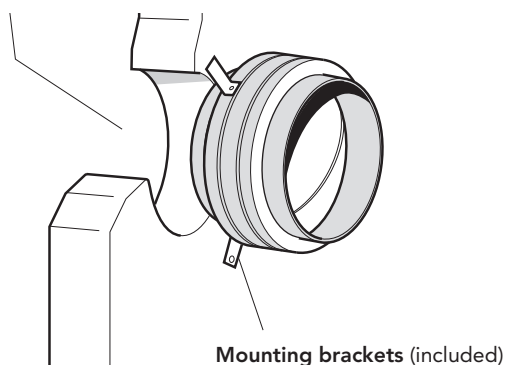
WITHOUT GAP FILLING AND ADDITIONAL SEALING

THE WALL CAN BE LIGHTWEIGHT PARTITION, PLASTER-BOARD, CONCRETE OR BRICK WALL THAT MEETS THE FIRE RESISTANCE CLASS EI 60.

1. Hole cutting

Duct dimension + 5 mm for dampers in the dimensions 100-315 mm.

Duct dimension + 10 mm for dampers in the dimensions 400-630 mm.

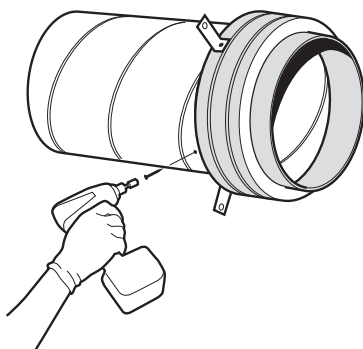


2. Mounting brackets

Attach the supplied mounting brackets evenly spaced around the damper using screws.

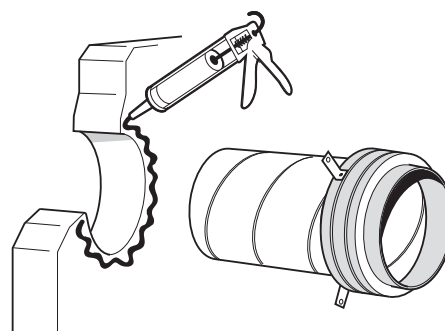
3. Mount the damper

Install the damper on the section of the duct that shall pass through the building section. **Make sure that the screws do not touch the damper blade.**



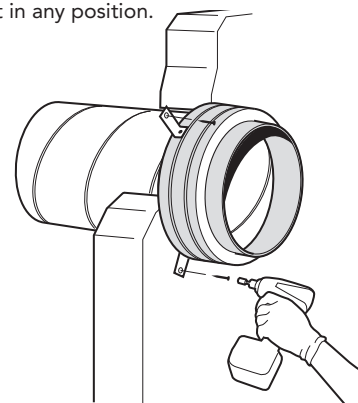
4. Sealing

Seal with fire-resistant sealant Bostik® Heat seal 1200 or Fire-seal® Firestop Sealant 3000 between the damper and wall.



5. Centring in hole cutting

Centre the damper in the hole and attach the damper to the wall with the mounting brackets. The damper can be installed with the damper shaft in any position.

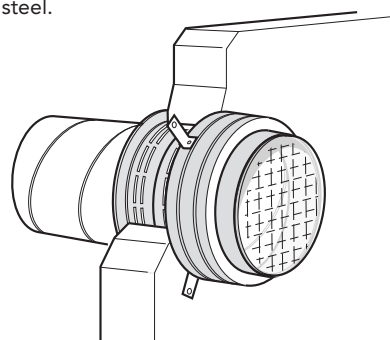


6. Load relief

If necessary, the weight of the damper can be supported against a fixed building structure. The load-bearing capacity of the mounting must comply with the fire-resistance class of the penetrated structural element.

7. Grille

Uncovered damper openings are fitted with a safety grille in galvanized steel.



ICBB

Inert gas damper

2. MOUNTING AGAINST WALL WITH GAP FILLING AND ADDITIONAL SEALING

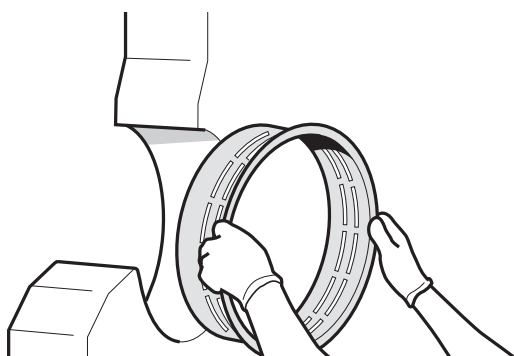
THE WALL CAN BE LIGHTWEIGHT PARTITION, PLASTER-BOARD, CONCRETE OR BRICK WALL THAT MEETS THE FIRE RESISTANCE CLASS EI 60.

1. Hole cutting

The hole in the wall should be the duct dimension + 50 mm.

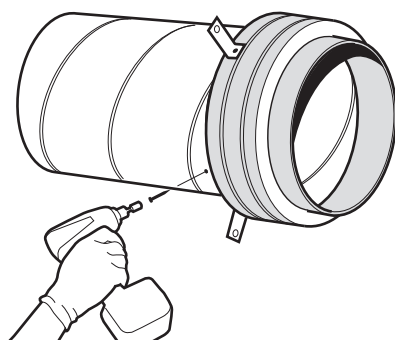
2. Mounting frame

When mounting with gap filling and additional sealing in light-weight partition walls, a mounting frame is needed. Mount the frame on each side of the wall and attach with screws.



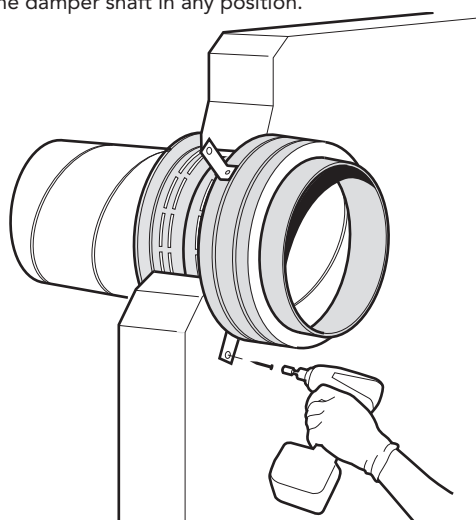
3. Mount the damper

Install the damper on the section of the duct that shall pass through the building section. **Make sure that the screws do not touch the damper blade.**



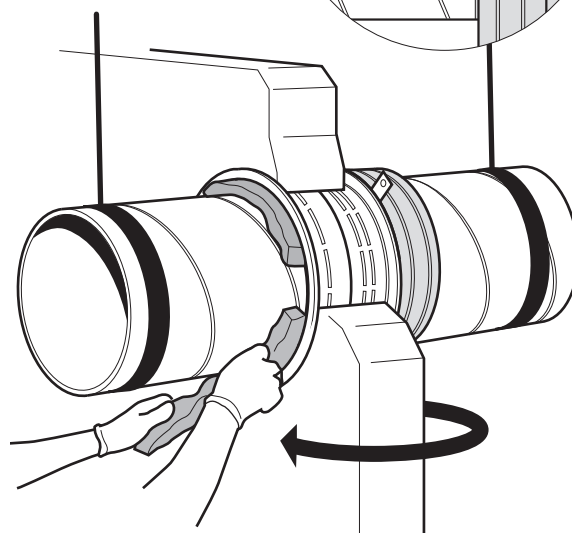
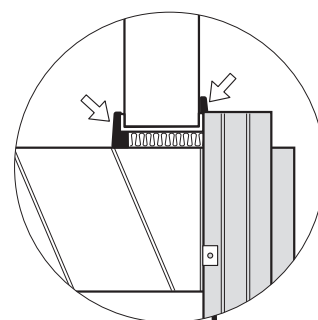
4. Centring in hole cutting

Centre the damper in the hole and attach the damper to the wall with the mounting brackets. The damper can be installed with the damper shaft in any position.



5. Gap filling/Additional sealing

The gap between the mounting frame and the connected duct is insulated with non-combustible mineral wool. Seal with fire-resistant sealant BRENNIX® brandfog or GRAFT® Akryl.



ICBB

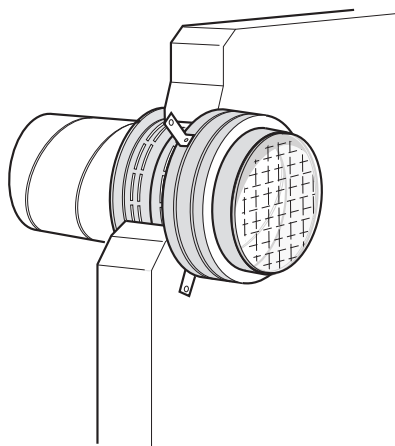
Inert gas damper

6. Load relief

If necessary, the weight of the damper can be supported against a fixed building structure. The load-bearing capacity of the mounting must comply with the fire-resistance class of the penetrated structural element.

7. Grille

Uncovered damper openings are fitted with a safety grille in galvanized steel.



ICBB

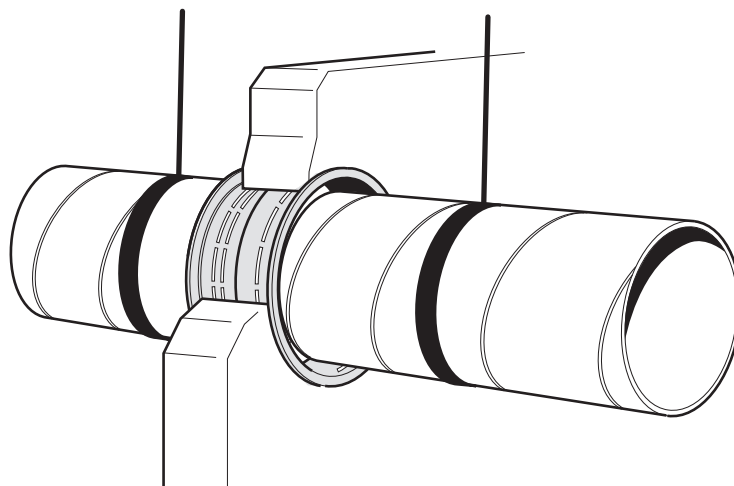
Inert gas damper

3. INSTALLATION ON DUCT

THE WALL CAN BE LIGHTWEIGHT PARTITION, PLASTERBOARD, CONCRETE OR BRICK WALL THAT MEETS THE FIRE RESISTANCE CLASS EI 60.

1. Duct installation

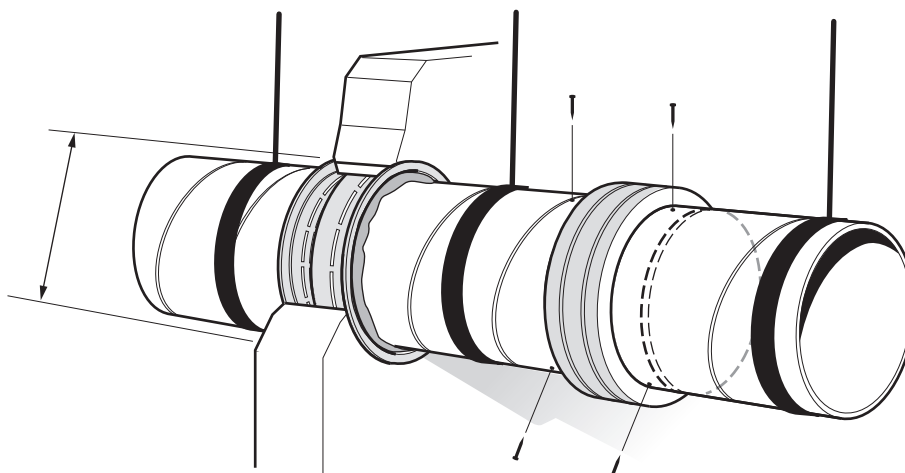
The duct is centred in the hole and then insulated with non-combustible mineral wool. Seal with fire-resistant sealant BRENNIX® brandfog or GRAFT® Akryl.



2. Mounting

Mount the damper in the duct. The damper can be installed with the damper shaft in any position. Attach the connecting duct section.

If necessary, the weight of the damper can be supported against a fixed building structure. The load-bearing capacity of the mounting must comply with the fire-resistance class of the penetrated structural element.

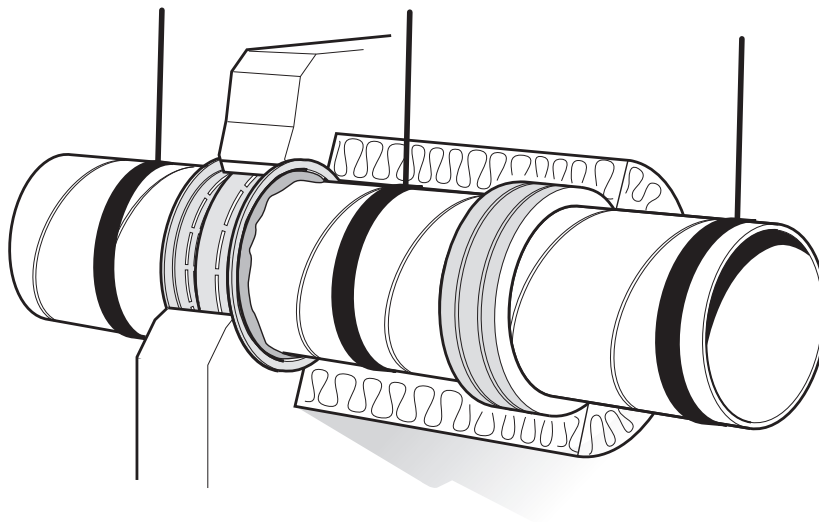


ICBB

Inert gas damper

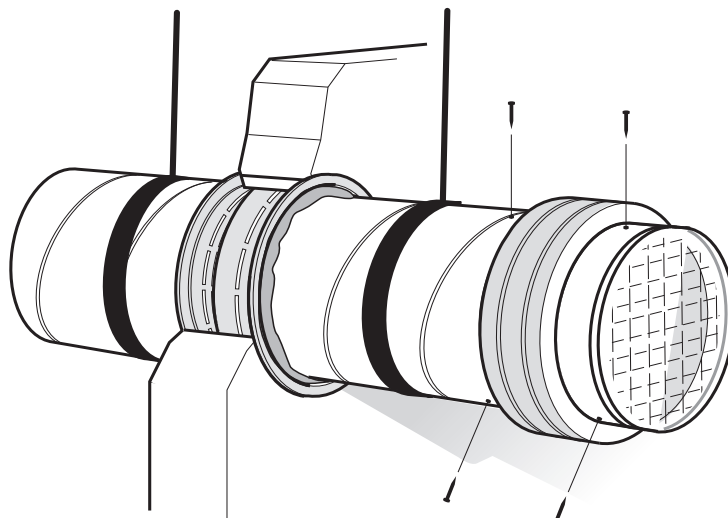
3. Insulation

Insulate the duct with Conlit® Fire Mat Comfort 80 mm. **The insulation should cover the entire damper.**



4. Cover grille

If the damper is not further connected to the duct system, it must be fitted with a cover grille in galvanized steel on the unconnected side. The minimum allowed distance between the damper blade (in its open state) and the grille is 50 mm.



ICBB

Inert gas damper

4. MOUNTING AGAINST FLOOR

THE FLOOR CAN BE LIGHTWEIGHT CONCRETE OR CONCRETE THAT MEETS THE FIRE RESISTANCE CLASS EI 60.

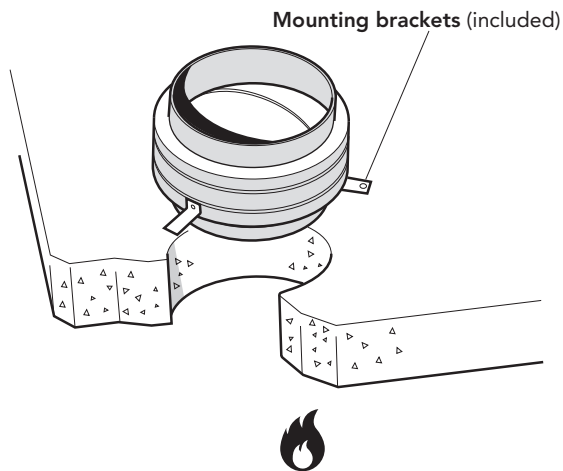
Installation is approved on the exterior side of the fire cell, on the top surface of the floor.

1. Hole cutting

The hole should be the duct dimension + 10 mm.

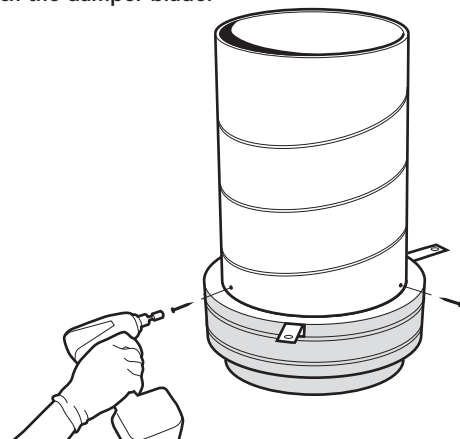
2. Mounting brackets

Attach the supplied mounting brackets evenly spaced around the damper using screws.



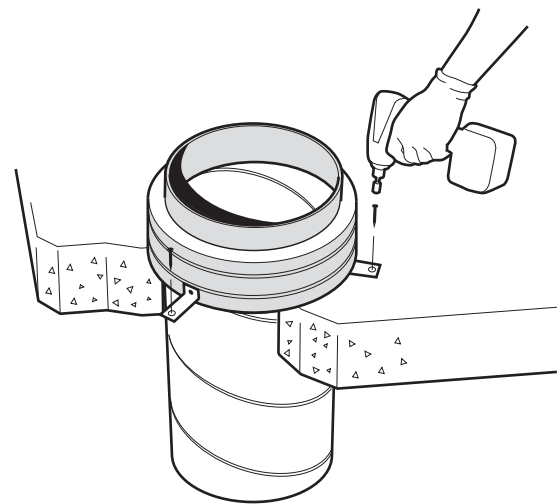
3. Mount the damper

Install the damper on the section of the duct that shall pass through the building section. **Make sure that the screws do not touch the damper blade.**



4. Centring in hole cutting

The damper cover is positioned against the building section, centered in the hole, and attached with the mounting brackets.



5. Sealing

The space between the duct and floor shall be sealed with fire-resistant sealant Bostik® Heat seal 1200 or Fireseal® Firestop Sealant 3000.

